

*****SPRING/SUMMER 2005---EXCITING NEW COURSE*****



**EM SC 470W:
Environmental Justice in South Africa**

Professors: Chris Benner, Rob Crane, Amy Glasmeier

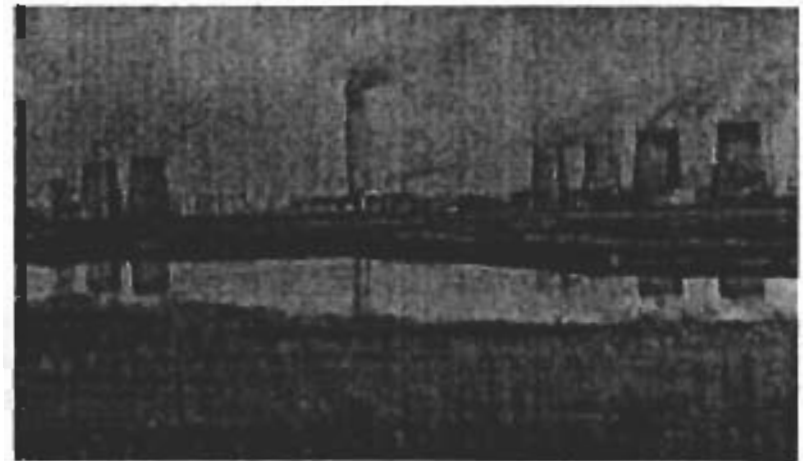
3 credits each in Spring and Fall 2005, and a work internship in May/June 2005 followed by:

A three week field research trip to South Africa in June 2005!!

Course Description: During the apartheid era in South Africa, the environment was seen as primarily an issue of concern for white, wealthy communities, with little relevance to the anti-apartheid struggle. Since the early 1990s, however, South Africa has experienced a vibrant debate on the meaning, causes, and effects of environmental decay. Joining a growing global movement, many South Africans worked to broaden the definition of *the environment* to focus on where South Africans live, work and play, placing people at the center of environmental concerns. In the process, their discourse has increasingly focused on *environmental justice*—linking environmental issues with the struggle for human rights and democratic accountability, and working to address the injustices evident in a range of environmentally related issues. In this context, justice does not refer simply to addressing environmental ‘wrongs’ within a legal framework, but instead embraces broad social, political, and economic strategies to promote socially fair and just environmental management.

This course critically analyzes these environmental processes and their outcomes in South Africa. It examines different theoretical frameworks for evaluating the equity implications of environmental management, and the distribution of environmental quality and environmental burdens. Students will analyze community and government responses to environmental injustices, and critically assess strategies to promote more ecologically sound and socially just practices. Specific topics that will be addressed in-depth include:

- The impacts of mining on community health, and strategies for mitigating negative exposure
- Processes of land reform and community management of land resources
- Urban livelihoods and environmental resources
- Impacts of tourism development and the potential for community-based tourism



Using video-conferencing, students will have the opportunity to regularly interact with South Africa students taking the same course at the University of Cape Town. The course culminates in a three-week trip to South Africa in June 2005, when PSU students will work in teams with their South African counterparts conducting applied research and policy analysis in three different communities. (Students will have to raise the funds for their airfare, but ground expenses in South Africa will be covered for all participants.)

Admission to the course is by permission of the instructor(s) only. For more information, please contact:
Chris Benner, Assistant Professor of Geography, cbenner@psu.edu 865-6693